

CASAMBI

SMART  
SWITCHING

---

## Smart switching

With the Smart switch feature, ordinary mains wall switches can be used as dimmers or configured to control luminaires or scenes. This feature is only available for Casambi devices that receive a direct mains input. Products that use an additional power supply (e.g. CBU-PWM-4) do not have Smart switch capability.

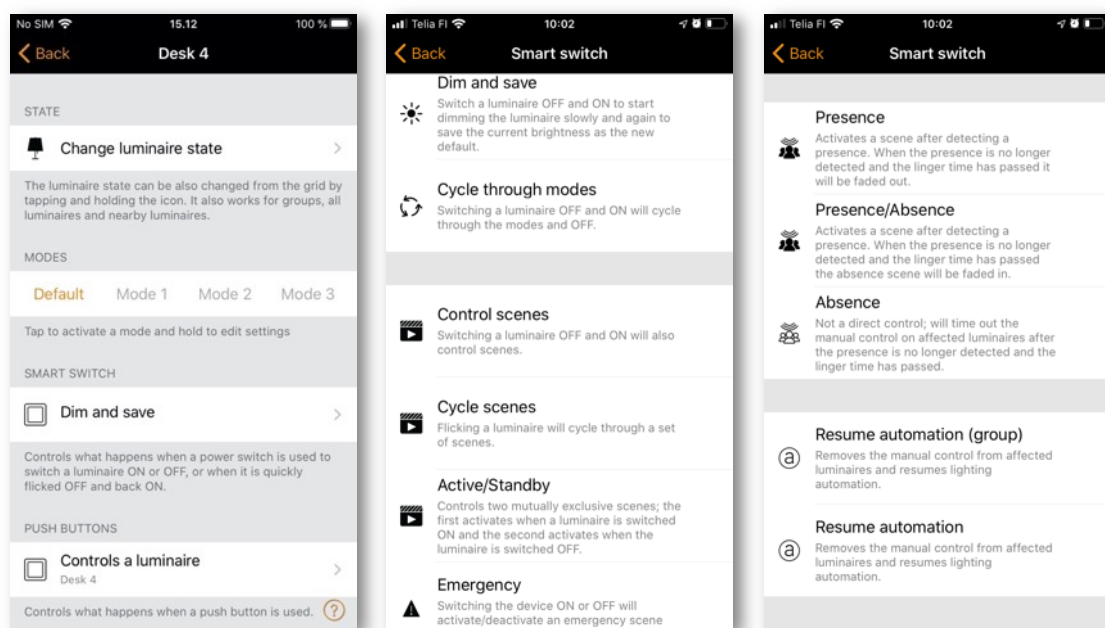
The Smart switch mode can be configured in Casambi app. It is possible to assign a different Smart switch mode to each Casambi enabled luminaire. For example, you can use Smart switch to switch on a scene when you come home or switch the lighting to be suitable for dinner party or watching a movie.

Go to the Luminaires tab and double tap the luminaire icon that you want to assign a Smart switch mode to.

Under the Smart switch section, select the current mode to open the Smart switch selection. The default mode is Dim and save.

The possible Smart switch modes are:

- Not in use
- Dim and save Controls one luminaire
- Cycle through modes Controls one luminaire
- Control scenes Controls one or multiple luminaires
- Cycle scenes Controls one or multiple luminaires
- Active / Standby Controls one or multiple luminaires
- Emergency activates a scene which cannot be manually over-ridden until the controlling device is powered off (for Evolution networks only)
- Presence Replicates a presence sensor
- Presence/Absence Replicates a presence/absence sensor
- Absence Replicates an absence sensor
- Resume automation (group) Resumes automation for a single group
- Resume automation Resumes automation for the whole network



## Dim and save

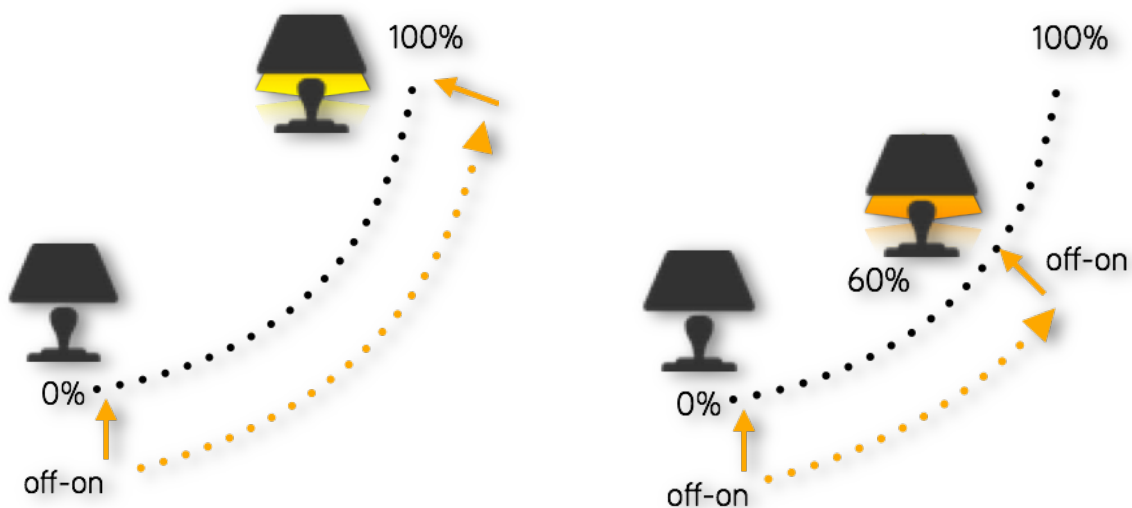
By default, Casambi enabled luminaires are set to use the Dim and save Smart switch mode. This means you can use the luminaires' power switch for dimming and setting the default light level.

To start the dimming process, quickly switch OFF and ON the light fixture from the power switch. After flicking the switch, the dimming process will start. Note that the speed at which the luminaire will dim from minimum to maximum level will be determined by the Fade time for switch dimming parameter set in the More tab, Network setup > Control options.

Once the light has reached the desired brightness flick the power or wall switch quickly OFF and ON again to save the current level as the new default brightness for the luminaire. You can then switch your luminaire off and on as normal and the default brightness level will be recalled each time you switch on.

It is possible to change the default brightness by starting the dimming process again by switching OFF and ON quickly.

To set the default brightness level back to maximum, just flick the power switch OFF and ON and allow the luminaire to dim up to maximum level. When the maximum level is reached it is automatically stored as the new default for the light fixture.



## Cycle through modes

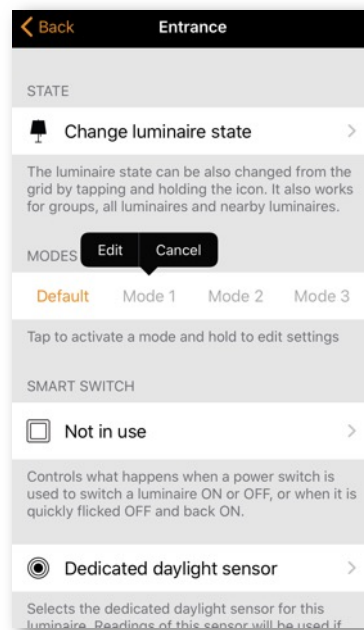
If you have set different modes for the luminaire with the Casambi app you can assign the power switch to control them. Modes can be different dimming levels, colours or colour temperatures. Flicking the power switch quickly OFF and ON will cycle between each configured mode and off (e.g. Default, Mode1, Mode2, Mode3, Off).

To set a mode, first hold down the mode number you want to configure. The option to Edit is then shown. Select Edit and adjust the light level, colour temperature or colour of a luminaire to its desired level (available options will depend on the type of luminaire). Tap outside the adjustment area to close the window. Repeat the steps to set more Modes.

After you have set all the desired modes tap the Smart switch mode and select Cycle through modes from the list. It is possible to disable the Off step by disabling the option Include OFF in the cycle.

Note that you do not have to set all modes. Only modes that have been configured will be included in the sequence.

Tip: Create a simple “step dimmer” by storing Mode 1 = 75%, Mode 2 = 50% and Mode 3 = 25%.



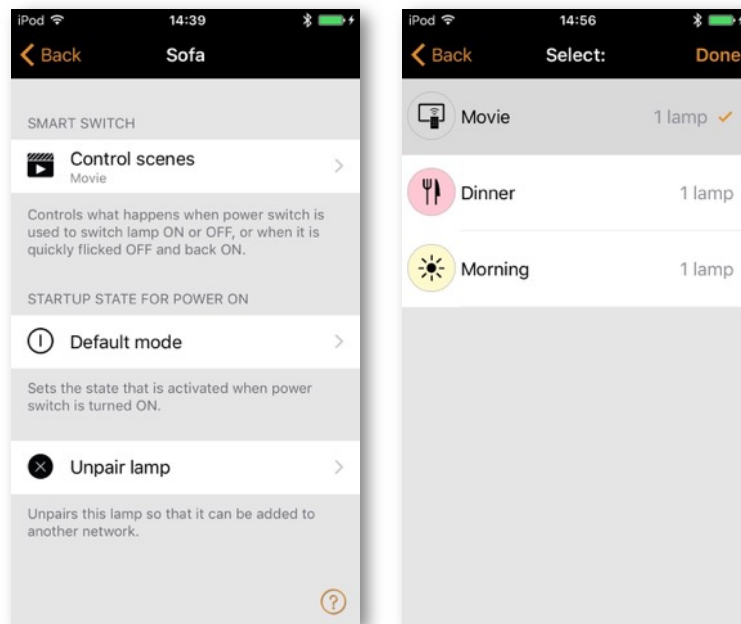
## Control scenes

If you have created different scenes with the Casambi app you can control them from a single power switch.

Turning on the luminaire that has this option configured will activate the specified scene and the luminaires in that scene will go to their defined scenario. Note that all luminaires in the scene must have power (The Control scenes option does not switch power on to any devices).

Turning off the Control scenes enabled luminaire will turn off the scene, and the luminaires that are currently controlled by that scene will fade off.

To enable this Smart switch option, select the 'Control scenes' option from Smart switch and tap on the desired scene to select it. Confirm changes with **Done**.



## Cycle scenes

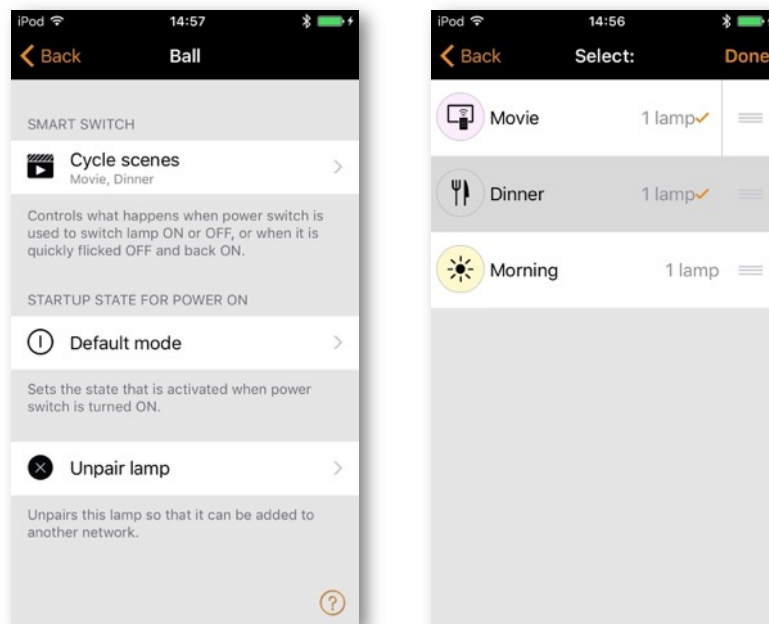
If you have created different scenes with the Casambi app you can cycle through them and Off with one power switch. Select the scenes you would like to cycle through and flick the power switch off and on to cycle through the selected scenes and Off. It is possible to disable the Off step by disabling the option Include OFF in the cycle.

Select the Cycle scenes option from Smart switch and tap on the desired scene or scenes to select them. It is also possible to change the order of the scenes by dragging and dropping the scenes around in the list by using the three parallel horizontal lines on the right of the screen next to the scene name. Confirm changes with **Done**.

Scenes will then be activated in the listed order (top to bottom).

Example: Selected scenes are Movie and Dinner. Include OFF in the cycle is active:

1. Flick off/on: Movie scene activates
2. Flick off/on: Movie scene deactivates, and Dinner scene activates
3. Flick off/on: Dinner scene deactivates, and lights fade Off
4. Flick off/on: Movie scene activates again
5. ....



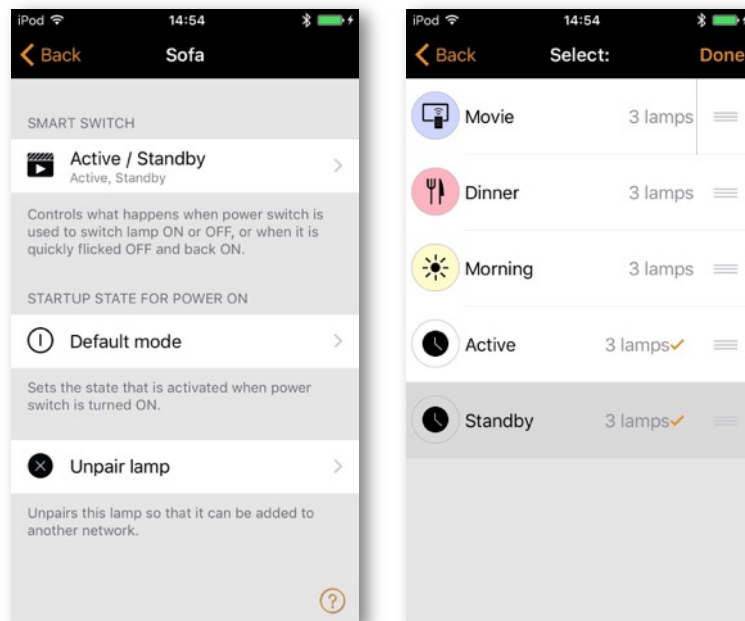
## Active/Standby

With Active/Standby Smart switch mode you can control two scenes that both have the same luminaires in them.

Create two scenes, one scene that should turn on when the controlling luminaire is powered ON (i.e. the Active scene) and one Standby scene that is turned on when the controlling luminaire powered OFF. This mode can be used for example with motion sensors.

Example: When motion is detected the luminaires go to full light level and when there is no motion the luminaires are dimmed to 30%.

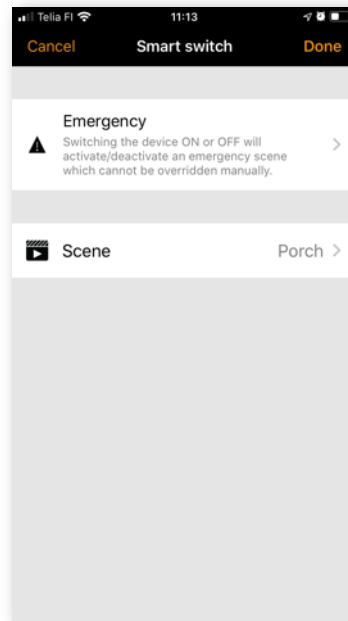
Note that the luminaires in the two scenes must always be powered i.e. They cannot be connected to the same power switch as is used to activate the device configured with Active/Standby Smart switch mode.



## Emergency

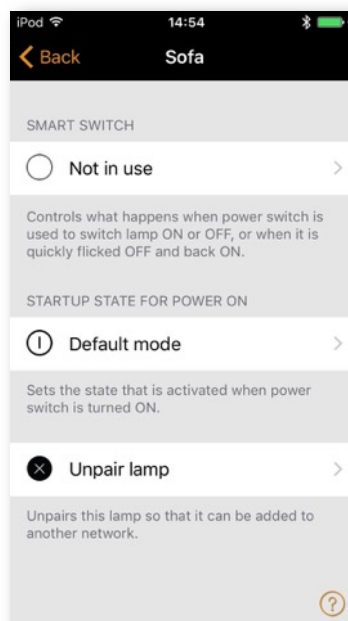
This option is only available with Evolution networks. This feature can be used with a latching wall switch to create an 'emergency switch'.

A scene is assigned to the Emergency Smart switch option. When the power to that device is ON, the assigned scene is activated and is only disabled when power to the device is switched OFF. i.e. Any luminaires used in the Emergency scene cannot be controlled by any other method until the Emergency device is powered OFF.



## Not in use

Sometimes it is necessary that the power switch doesn't do anything special when used. The Not in use option will disable our Smart switch feature.





CASAMBI